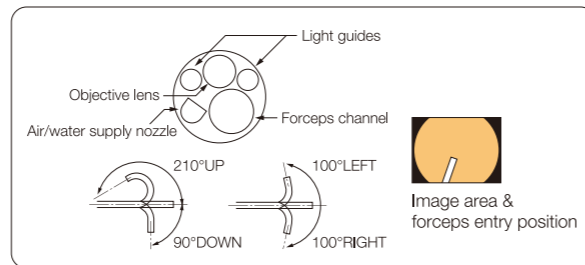




# EG-580NW2

Video Gastroscope

Specification	
Field of view	140°
Observation range	3~100 mm
Distal end diameter	5.8 mm
Flexible portion diameter	5.9 mm
Forceps channel diameter	2.4 mm
Bending capability	UP 210° / DOWN 90° RIGHT 100° / LEFT 100°
Working length	1,100 mm
Total length	1,400 mm
Compatible video processor	VP-4450, VP-4450HD



Specifications are subject to change without notice.  
Product name: Video Endoscope EG-580NW2  
GMDN:  
Generic name: Flexible video gastroduodenoscope

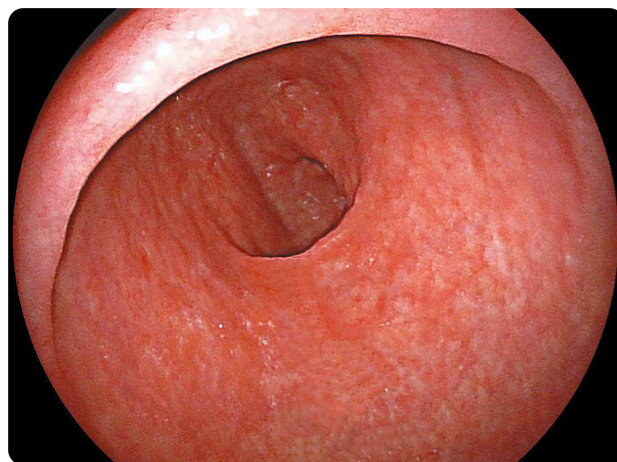


- High resolution images
- **2.4mm** diameter forceps channel
- Easy insertion and smooth operability

# Advanced ultra-slim endoscope for both transnasal and transoral use

## High resolution images

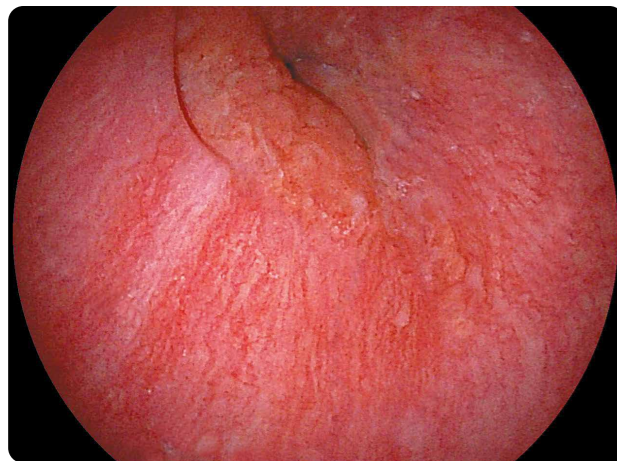
Despite the ultra-small diameter distal end of 5.8 mm, the new High Resolution Super CCD and new optical system deliver high image quality that is as good as a conventional transoral endoscope.



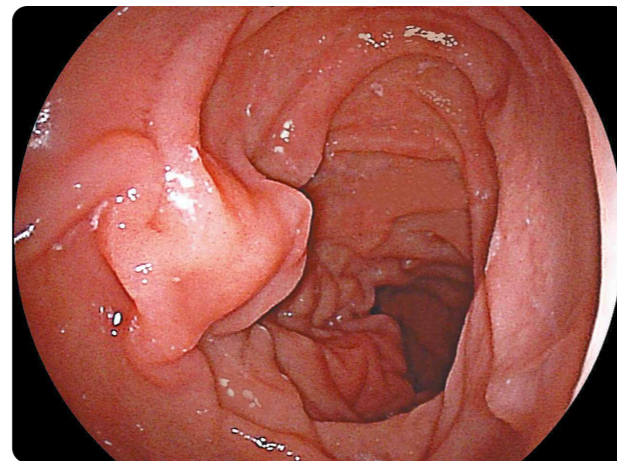
Stomach



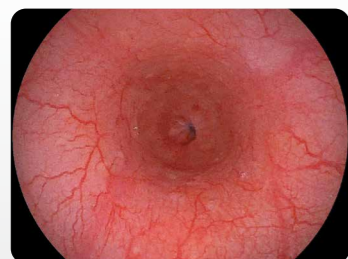
Stomach (FICE)



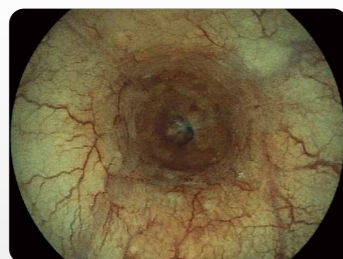
Esophagus



Duodenum



[White light images]



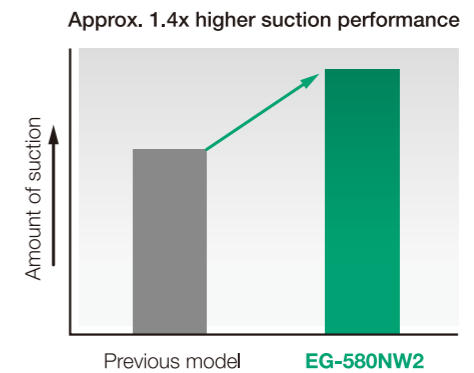
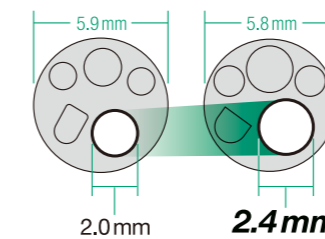
[FICE images]

The additional use of FICE makes it possible to more easily identify neoplastic lesions and improve visibility of the boundary between lesions and normal tissue.

## Forceps channel diameter of 2.4 mm

By increasing the forceps channel diameter from 2.0 mm to 2.4 mm, the suction capacity improved by approximately 1.4 times compared with previous models.

When a biopsy forcep is inserted, the suction performance is increased by approximately 7 times, thus assisting faster examinations.



## Easy insertion and smooth operability

The slim distal end diameter of 5.8mm and the angulation control which is equivalent to that of conventional transoral endoscopes supports stress free, fast and accurate examinations and less patient discomfort.

